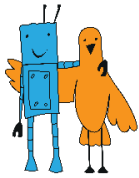


«LINE FOLLOWER» CONTEST RULES «NARROW LINE FOLLOWER. EDUCATIONAL KITS» CATEGORY

Version 1.0 dated July 20, 2017

Contents

1. Specifications of the field and lines	2
2. Requirements for the Robot	2
3. Contest procedure.....	3
3.1. Disqualification conditions.....	3
4. Scoring	3
5. Revision History.....	4



1. Specifications of the field and lines

General requirements for the field and lines are given in the general contest rules.

There are the following specifications of the "Narrow line follower. Educational kits" category:

line width: 15mm

radius of curvature: not less than 75 mm

There are additional requirements for the "Narrow line follower. Educational kits" category:

follower line begins in the start area and ends at the finish area;

starting and ending point of the line should be clearly highlighted with transverse line;

the line should not cross itself at any point;

the minimum distance at which the line should approach the end of the competitive field must be at least 15 cm when measured from the center line;

there can be angles of not less than 90 degrees.

2. Requirements for the Robot

General requirements for the robot are given in the general contest rules.

There are the following specifications of the robot in the "Narrow line follower. Educational kits" category:

length: not more than 30 cm;

width: not more than 30 cm;

weight: not more than 7.5 kg.

Robots acting in the "Narrow line follower. Educational kits" category shall be built of educational constructions. Educational constructions include the construction sets produced by:

Lego,

Fischertechnik,

VEX,

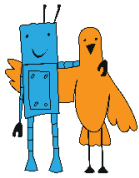
Huna,

TRIK,

Robotics.

Any manually fabricated or 3D printed plastic parts can be used to construct robots.

Any electronic hardware may be used only from the education construction set.



3. Contest procedure

General contest procedure are given in the general contest rules.

In order to complete one attempt the robot is given the 1 minute.

The line may be left only tangentially from the outside, provided the length of the section which the robot passes tangentially does not exceed three lengths of the robot body.

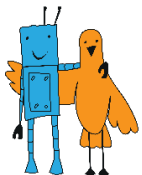
The robot that left the line when participating in these categories, should return to the line in the place where it left the line or at any earlier (already passed) point of the route.

3.1. Disqualification conditions

Disqualification conditions are given in the general contest rules.

4. Scoring

The scoring is given in the general contest rules.



5. Revision History

№	Doc. No.	Date	Note	Previous version	Update version
1	2	3	4	5	6
1.					
2.					
3.					
4.					
5.					
6.					
7.					
8.					
9.					
10.					
11.					
12.					
13.					
14.					
15.					